

Stainless Terminal Boxes



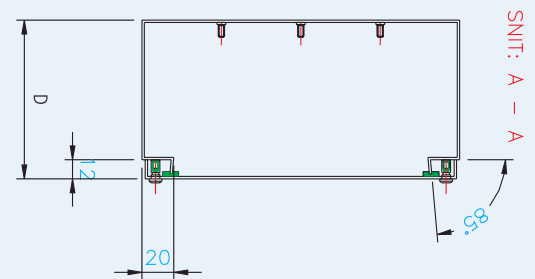
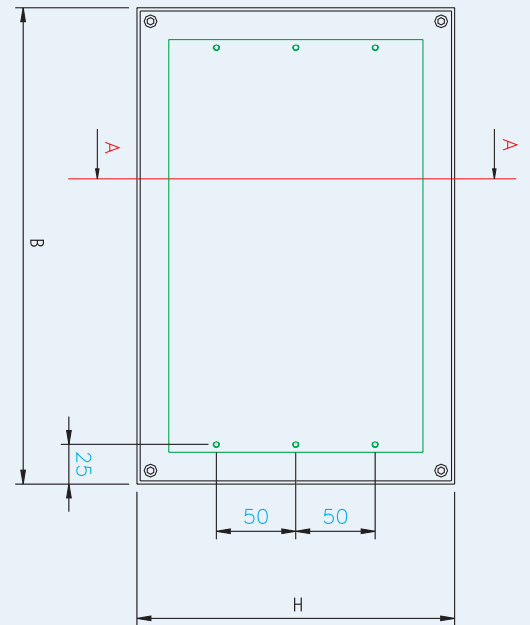
SST's stainless terminal boxes are manufactured from 1.5 mm stainless ground plate grain 220 AISI 304, DIN 1.4301, SS 2333. The terminal boxes are manufactured in the highest quality and finish. They also come in acid-resistant material AISI 316, DIN 1.4401, SS 2347. The cover screws, which are provided with an internal hexagon head, are located outside the drip edge, which is bent to 85°. The terminal boxes meet the requirements for IP 66 and UL 50 type 4 and 4X.



HIGHLIGHTS

- + Extruded EPDM rubber strip with extremely good durability against cleaning agents
- + IP 66 [DEMKO] and UL 50 type 4 and 4X
- + Prepared for DIN rail mounting

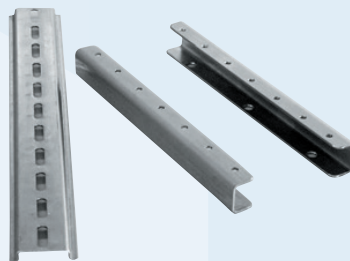
Stainless Terminal Boxes



Accessories

- Mounting rail for DIN rail
- DIN rail
- Mounting plate
- Various hole removal
- Cover with glass made of polycarbonate sheet (clear or smoke-coloured)

Special design in all sizes up to 800x600x300 mm



AISI 304	AISI 316	External measurements	Clearance	Mounting depth	Bottom plate	Weight
Item number	Item number	WxHxD (mm)	WxH (mm)	M (mm)	WxH (mm)	Kg
240-101-006	241-101-006	100x100x60	60x60	-	-	0,6 kg
240-101-008	241-101-008	100x100x80	60x60	-	-	0,7 kg
240-151-510	241-151-510	150x150x100	110x110	82 mm	125x105	1,3 kg
240-201-510	241-201-510	200x150x100	160x110	82 mm	175x105	1,5 kg
240-301-510	241-301-510	300x150x100	260x110	82 mm	275x105	2,0 kg
240-202-010	241-202-010	200x200x100	160x160	82 mm	175x155	1,6 kg
240-302-010	241-302-010	300x200x100	260x160	82 mm	275x155	2,8 kg
240-302-012	241-302-012	300x200x120	260x160	102 mm	275x155	3,0 kg
240-402-010	241-402-010	400x200x100	360x160	82 mm	375x155	3,2 kg

W = Width, H = Height, D = Depth, M = Mounting depth (distance from base plate to back of cover)